

Need a Mortgage in principle
to make offers? Call us now
for quick assistance!
0121 775 0101

DM&Co.
SALES & LETTINGS



Do you need to sell?
Start your journey now!
Call us we can help.
0121 775 0101

DM&Co.
SALES & LETTINGS



SCAN FOR MORE INFO

SIZE - 3389 Sq Ft
TENURE - Freehold
COUNCIL TAX - Solihull Metropolitan Borough Council - G
BROADBAND - Upload Max 1000Mbps Download Max 1800Mbps
MOBILE SERVICES - 3 - 84%, EE - 82%, O2 - 80%, Vodafone - 77%
EPC - E - 52
PARKING - For at least 6 Cars
FLOODRISK - Very Low
SERVICES - Mains
COVENANTS - N/A

Are you an investor interested
in expanding your portfolio?

Call **0121 775 0101** to provide your
investment criteria for alerts.

19 Woodside Way
Solihull, B91 1HB
Offers Over £900,000

This is one for buyers with vision.

Set on an impressive third of an acre in a quiet and well-regarded Solihull location, this substantial six-bedroom home offers a genuine opportunity to create something exceptional. With three reception rooms, an integral garage and an in-and-out driveway, the scale and setting immediately stand out.

The property is very much a back-to-brick project

FEATURES

- Renovation Opportunity
- Three Receptions
- Six Bedrooms
- Galleried Landing
- In & Out Drive Way
- Large South West Facing Garden
- Quite Location Close to Park
- NO UPWARD CHAIN
- Conveniently Located for Schools, Shops, Airport and Motorways



SCAN TO VIEW OUR
WEEKLY FILMS &
SUBSCRIBE

Sneak Peeks

Every week, we unveil "Sneak Peeks," a feature showcasing exclusive properties before they hit Rightmove and other platforms.

The Landlord Club

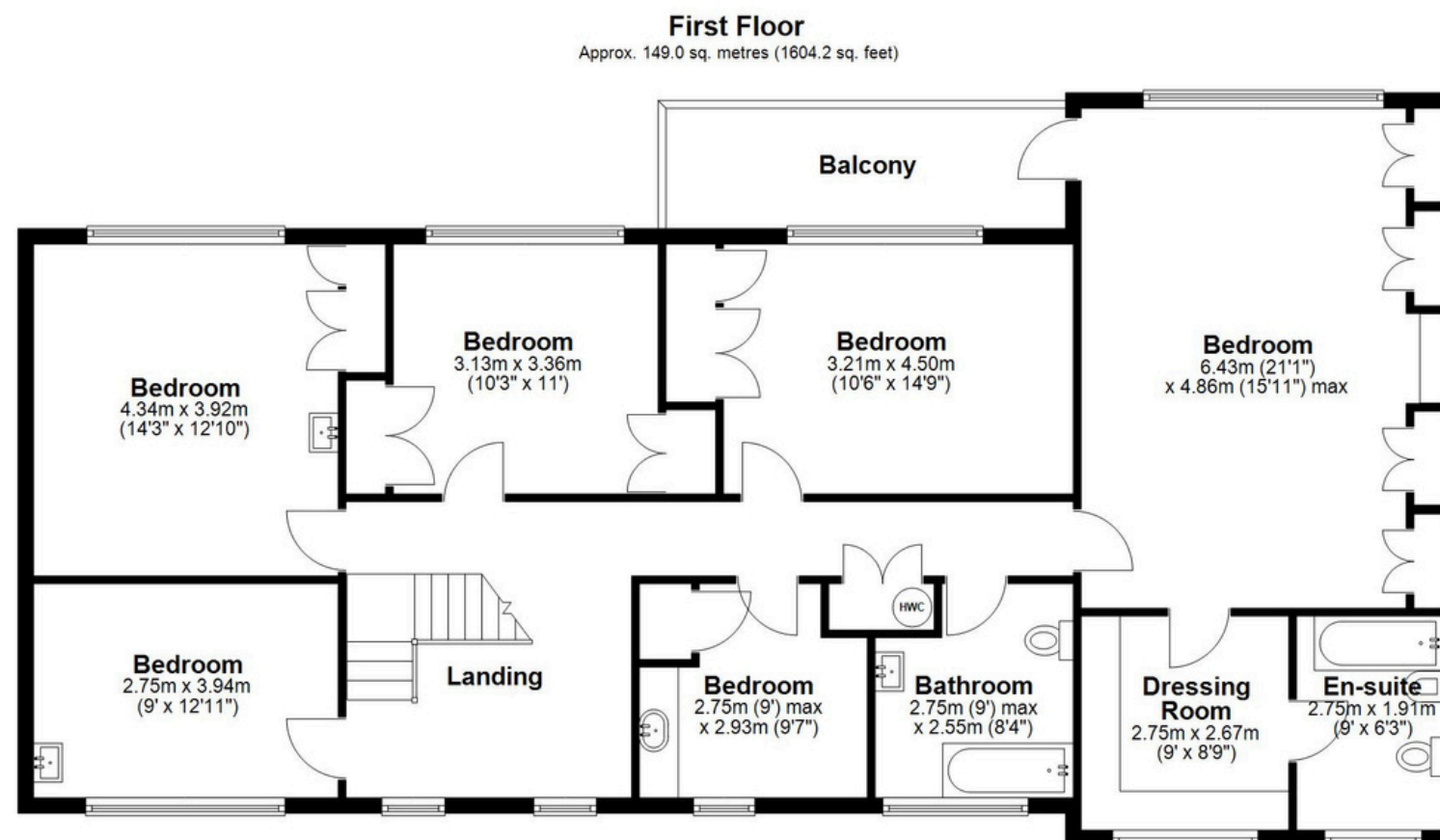
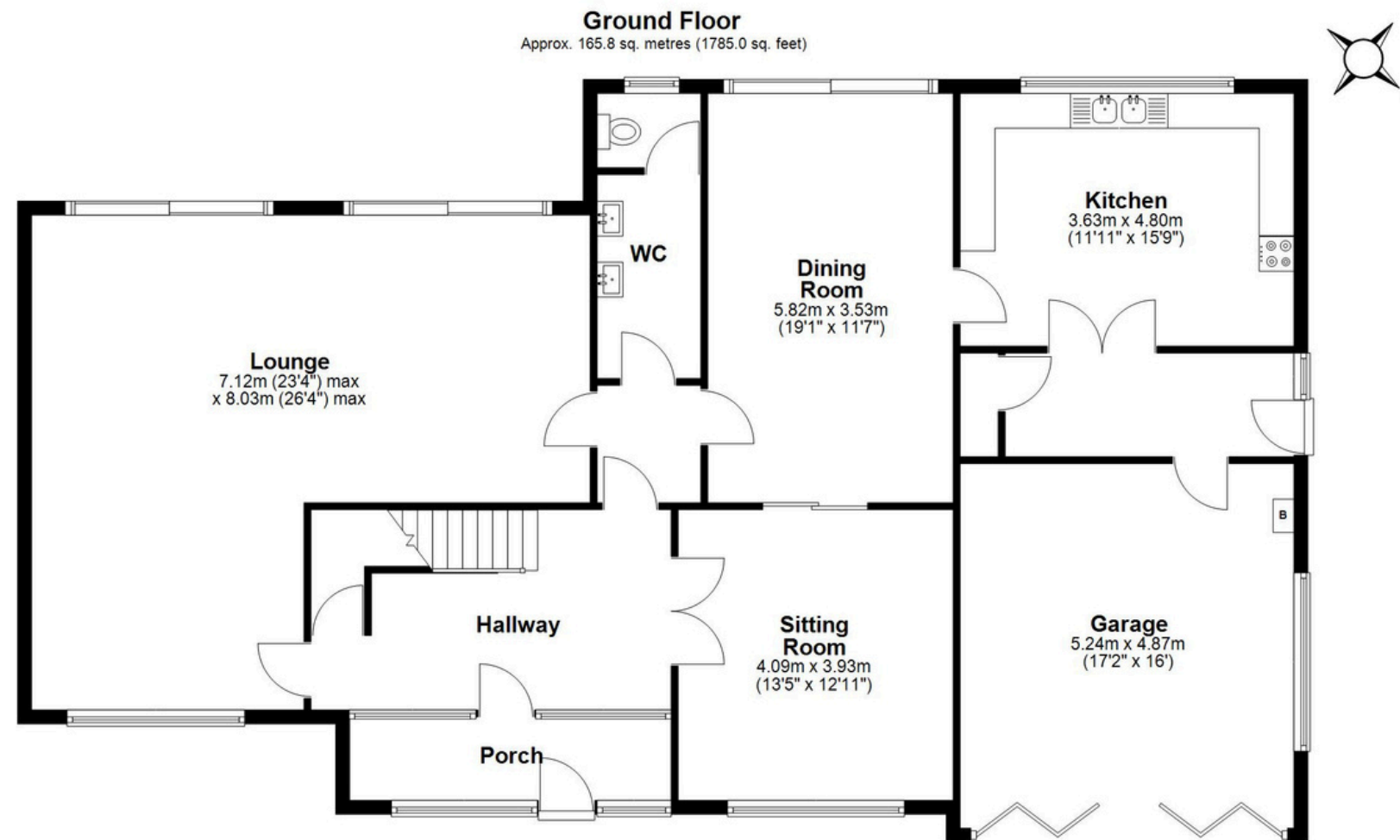
Join our Landlord Club for weekly updates on legislation, market trends, and our Letting Director's 'Investment Pick of the Week' for optimal ROI.

HTSPMD

Tune into 'How's The Solihull Property Market Dom' weekly for a quick, insightful snapshot of the market.

The Mortgage Update

Get weekly insights and the best deals with our Mortgage Update, your shortcut to navigating the complex mortgage landscape confidently.



Total area: approx. 314.9 sq. metres (3389.2 sq. feet)

This floor plan is for illustration purposes only, this is not intended to be a measured/scaled survey or comply with RICS guidelines. All measurements (including total floor area) openings, orientation and floor area are approximate. No details are guaranteed, they cannot be relied upon for any purpose and do not form part of any agreement. A party must rely upon its own inspection(s). No responsibility is taken for any error, omission, or mis-statement.
Plan produced using PlanUp.